

**MERLIN**<sup>®</sup>

# MLGC-TL4

Deployable portable lighting in one  
bespoke robust package.

## Portable Light Tower



# SPEEDY DEPLOYMENT

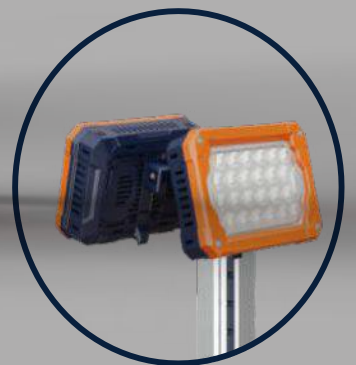
---

## MULTIPLE LIGHTING DISTRIBUTION



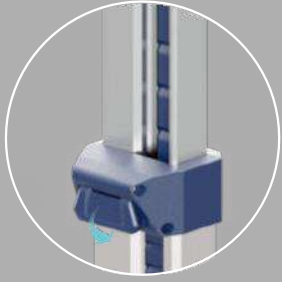
**Single latch to release tripod**

Deploy or fold in seconds.



## Self locking Pole

Drag & Lock at any position, contraction in one push.



Press down to hold the pole



180°

180°

330°

360°  
Up/ down/ left/ right adjustable

In built damping mechanism for ease of adjustment to cover lighting area required.

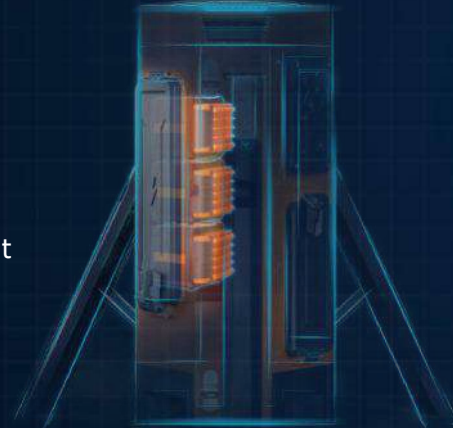
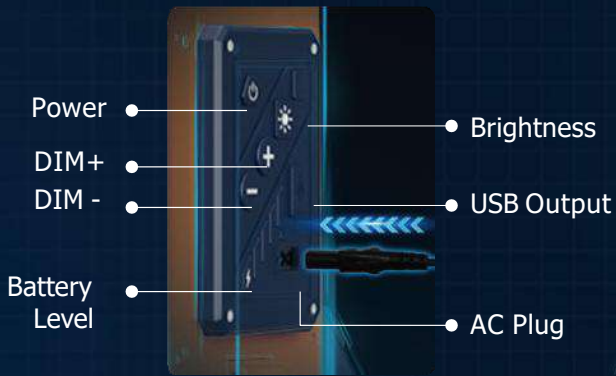


# Ultra-Long Endurance

Standard Mode Up To **20+** Hours

(3xMLGC-BP2)

## Control Board



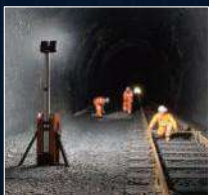
## Application



Emergency



Infrastructure



Railway



Event



Maintenance



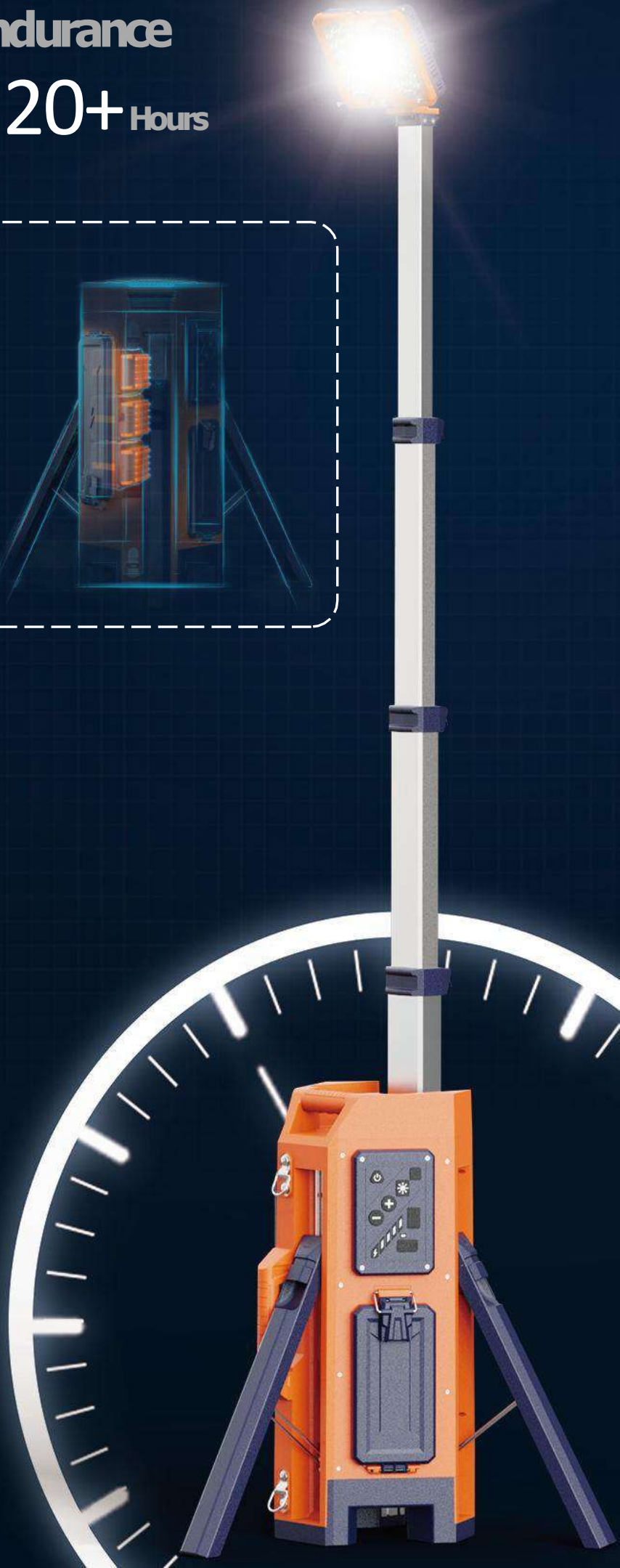
Mining



Sport



Construction



AC Powered

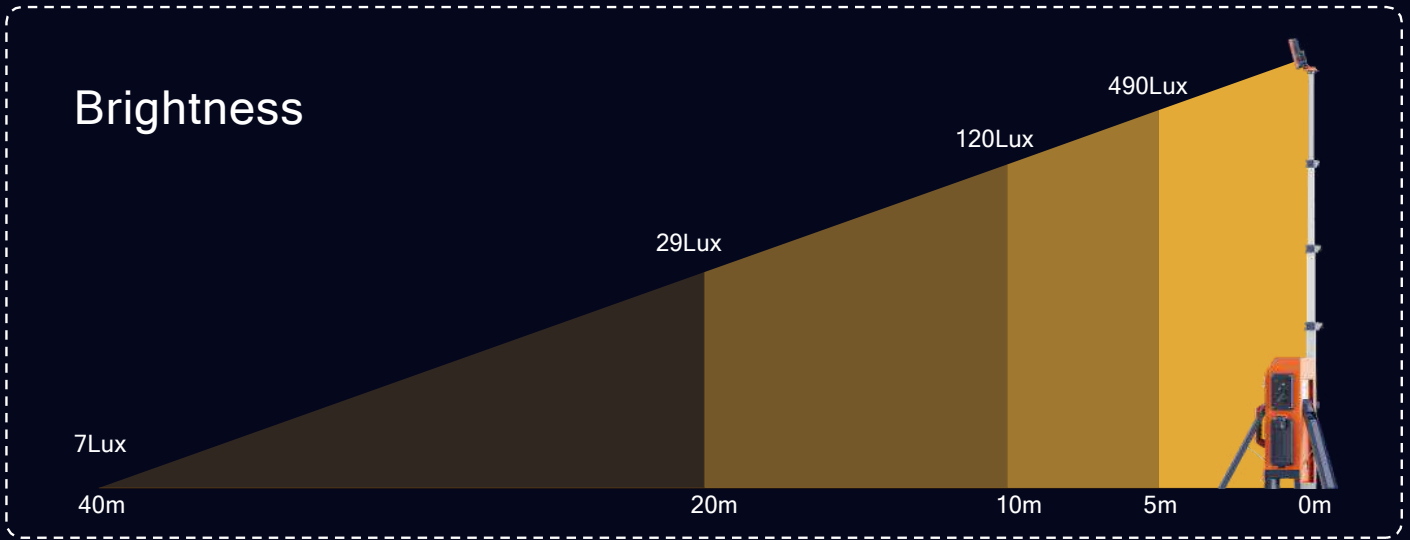
Up To 17,000

LM

Battery-powered

Up To 10,000

LM



\* 'Brightness' represents the center point illuminance value of the lighting direction.

AC	0-17,000LM Stepless Dimmable	
Battery (4 Mode)	Turbo	10,000LM
	Standard	6,300LM
	Balanced	3,800LM
	Eco	1,000LM



\* 'Lighting Area' represents the total lighting area of which > 1Lux.

## One-person Operation

Transport, deploy, adjust lighting in seconds with one operator.



Dual handle & strap available, 10Kg.



# Optional Accessories

## 9 Bay Simultaneous Rapid Charger (TKC-9)

Carry 9 battery packs, charge them for off-grid light tower operation for up to a week.



Achieve 15000LM full brightness with the driver, or operate wirelessly using a battery and charger.

Cover all possibilities with a choice of Power Options.



Battery (BP Series)

Charger (DBPC)

Driver (DR)

Charger (SBPC)

S3 Flash Light

T2 Head Light

MLGC-TL4 is a main light source that doubles as a USB charger for T2 headlamps, S3 flashlights, and mobile devices.

Fully equipped for any challenges in the dark!

# Specifications

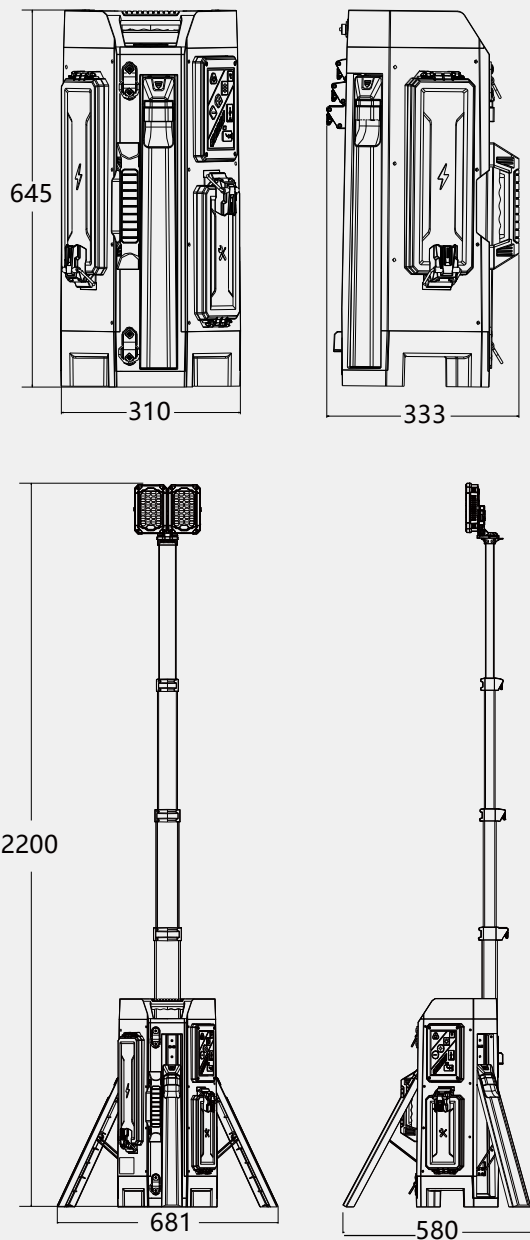
## MLGC-TL4

Hight	64.5cm~220cm
Weight	10Kg (Fitting only)
Power Supply	Battery / AC 100-277V
Lumens	0 - 17,000Lm
Run Times	> 20 hours (Standard mode, MLGC-BP2)
IP Grade	IP65
Output(USB)	5V 2A (2 Dock)
Battery System	MLGC-BP2

## Battery (MLGC-BP2)

Rated Power	98Wh
Rated Voltage	24.5V
Rated Capacity	4.0Ah
Working Temperature	-10~50°C
Working Humidity	1~98%

## Size (mm)



## Package

Size of Carton	Gross Weight of Carton	PCS/Carton
730x390x410mm	13.3kg±5%	1



**MERLIN EQUIPMENT PTE LTD**

69B Tuas Bay Drive, Singapore 636827

Tel: +65 6863 1753

Email: [sales@merlinequip.com](mailto:sales@merlinequip.com)